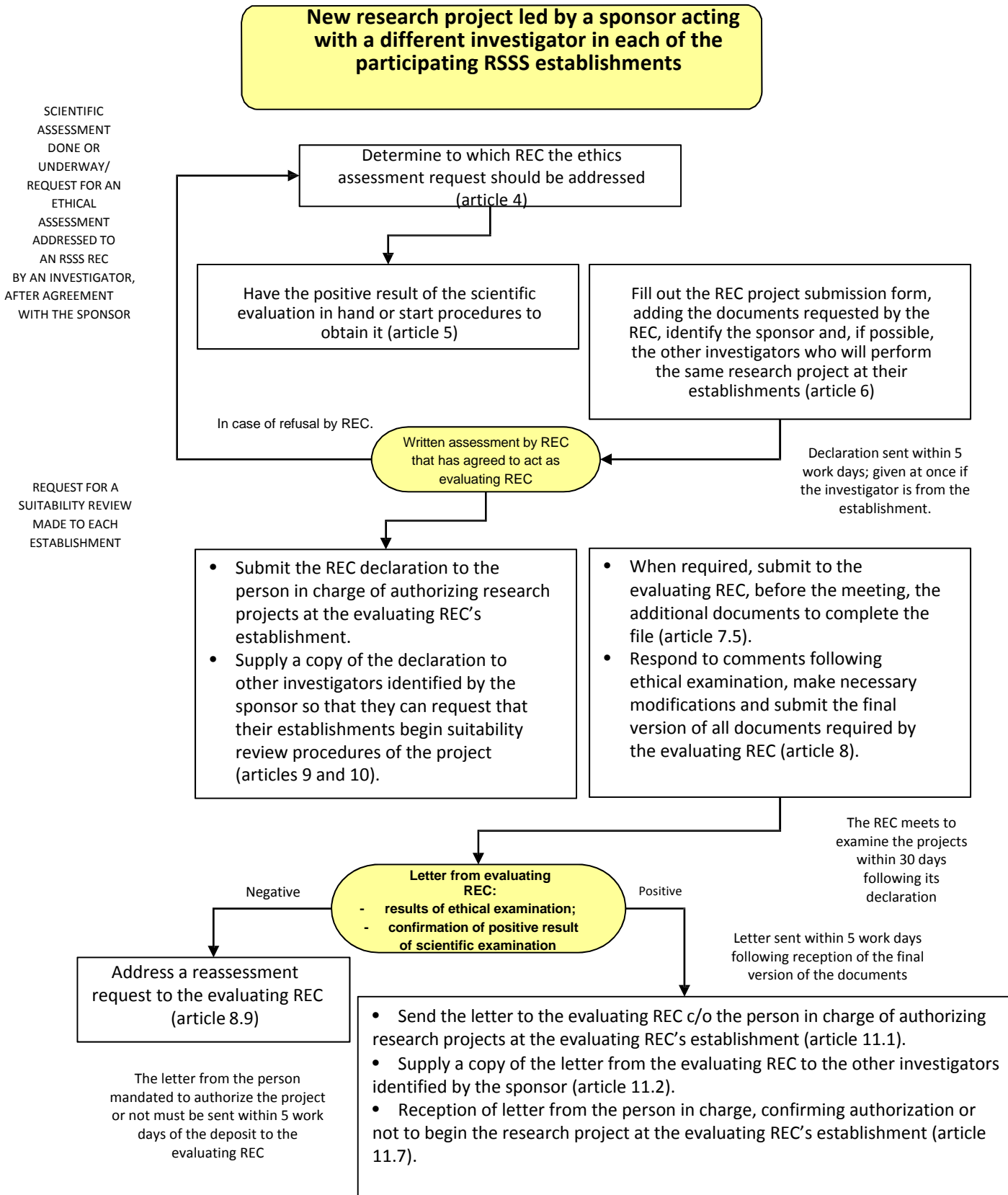


Roles and responsibilities of an investigator working with a sponsor – page 1 of 2



Roles and responsibilities of an investigator working with a sponsor – page 2 of 2

CONSTANT
ETHICAL
MONITORING

During project realisation (article 12):

- Supply the required notifications to the evaluating REC for constant ethical monitoring when they involve the project in general or the evaluating REC's establishment (article 12.2).
- Produce an annual report on the state of the research project at the evaluating REC's establishment.
- Communicate all pertinent information to the person in charge at the evaluating REC's establishment.